



EMMA SALES LLC
13245 Atlantic Blvd
Suite 4304
Jacksonville, FL 32225
PHONE: 615 210 9141
FAX: 888 542 6861
processing@emmasales.com
emmasales.com



U.S. Patent No. 7575018 and 8430116

Greetings,

Thank you for the interest in the Boxlok. The Boxlok is a Valve Box Alignment Device, keeping the valve box or PVC riser from pushing against the valve operating nut, rendering it inoperable.

The Boxlok was born in the Mid-West, in 2005, due to a specification requiring all valves to be fitted with a valve alignment device. The Boxlok is not only the simplest of these designs, but also the most practical. The Boxlok is a non-load bearing unit, keeping the valve working as it was designed, along with aligning the operating nut so exercising the valve is always possible. The Boxlok also keeps the valve box cleaner by keeping debris from coming up from the ground.

Enclosed is our General Information Packet, or General Submittal. It includes our handout for the Boxlok, suggested specification, customer references, place of manufacture, and the Boxlok video link.

If more is required for product consideration, please contact EMMA SALES LLC.

Sincerely,

EMMA SALES LLC

THE VALVE BOX ALIGNER **BOXLOK**

U.S. Patent No. 7575018 and 8430116

ELIMINATE VALVE BOX SHIFT DURING BACKFILL WITH THE BOXLOK

. SNAPS AROUND THE VALVE STEM—
UNDER THE OPERATING NUT, ABOVE THE
SEAL PLATE

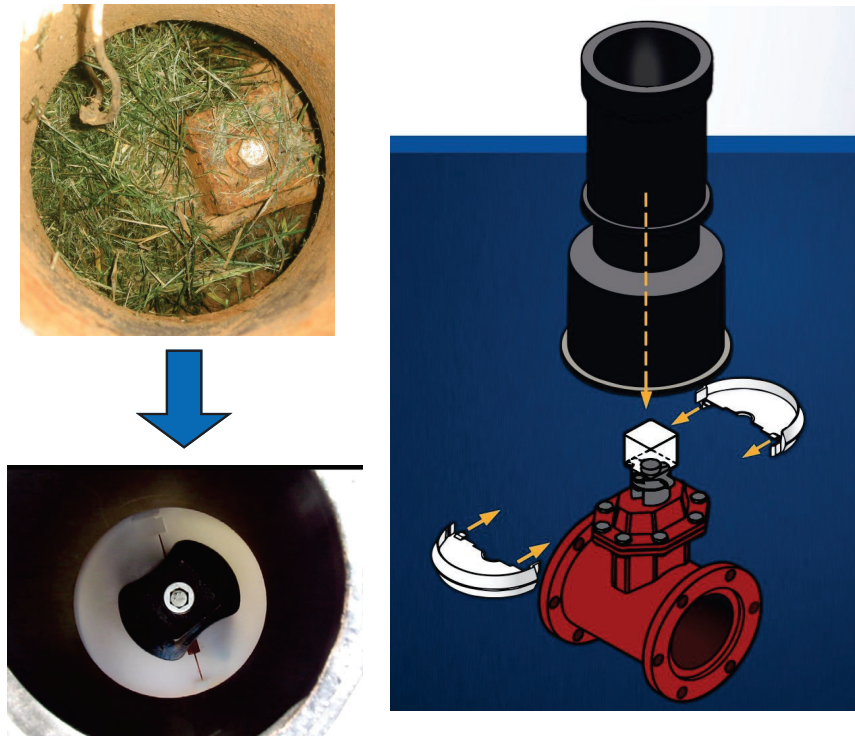
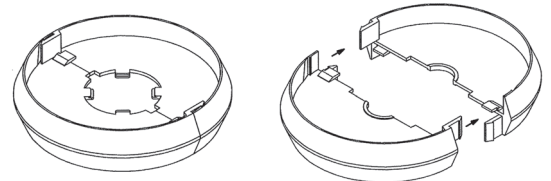
. WORKS WITH NEARLY ALL BURIED
VALVES WITH VALVE BOX ACCESS

. LOW COST SOLUTION TO A HIGH COST
PROBLEM

. FOR USE WITH CAST IRON VALVE BOXES,
6" PVC RISERS, AND 8" PVC

. MORE THAN 100,000 IN USE TODAY

. MADE IN THE USA



WHICH UNIT IS RIGHT FOR ME?

Match the valve manufacturer by size to find the Boxlok model number.

CAST IRON VALVE BOX /8" PVC (O.D. OF BOXLOK = 7.5")

MANUFACTURER	VALVE SIZE							
	2"	3"	4"	6"	8"	10"	12"	12+"
AVK	1	1	1	1	1	1	1	**
AFC	2	2	2	2	2	1	1	**
J&S Valve	2	2	2	2	2	1	1	**
East Jordan	2	2	2	2	2	2	1	**
Mueller	2	2	2	2	2	1	1	**
US Pipe	2	2	2	2	2	2	1	**

Clow	2	2	2	2	2	K1	K1	K1
Kennedy	2	2	2	2	2	K1	K1	K1
M&H	2	2	2	2	2	K1	K1	K1

6" PVC PIPE (O.D. OF BOXLOK = 5.5")

MANUFACTURER	VALVE SIZE							
	2"	3"	4"	6"	8"	10"	12"	12+"
AVK	3	3	3	3	3	3	3	3
AFC	4	4	4	4	4	3	3	3
J&S Valve	4	4	4	4	4	3	3	3
East Jordan	4	4	4	4	4	4	3	3
Mueller	4	4	4	4	4	3	3	3
US Pipe	4	4	4	4	4	4	3	3
Clow	4	4	4	4	4	K3	K3	K3
Kennedy	4	4	4	4	4	K3	K3	K3
M&H	4	4	4	4	4	K3	K3	K3

** CALL 615-210-9141 | EMAIL: PROCESSING@EMMASALES.COM

NOW AVAILABLE THROUGH YOUR LOCAL WATERWORKS SUPPLIER

SPECIFICATION PACKAGES AVAILABLE | CALL: 615-210-9141

THIS IS AN ALIGNMENT DEVICE, NOT A LOAD BEARING UNIT





EMMA SALES LLC
13245 Atlantic Blvd
Suite 4304
Jacksonville, FL 32225
PHONE: 615 210 9141
FAX: 888 542 6861
processing@emmasales.com
emmasales.com



U.S. Patent No. 7575018 and 8430116

BOXLOK PRODUCT SPECIFICATIONS

All buried valves requiring a conventional cast iron valve box (8" I.D. base) or 6" PVC/DIP pipe for valve key access/operation shall be furnished/affixed with a Valve Box Alignment Device (VBAD) prior burial. The device shall be of HDPE, white in color, and does not contain metal/ferrous components in its construction. It shall be furnished in two pieces locking loosely together to the exposed valve stem just under the operating nut without requiring the removal of the op-nut. The device shall not affect the operation of the valve nor will the device create a load-bearing environment therefore facilitating any surface impact through the valve box and onto the water or sewer main. The device shall be the BOXLOK as manufactured by EMMA Sales, LLC, or approved equal.

Suggested Format:

- All direct-buried valves through requiring surface access via conventional cast-iron (8" I.D. base) and/or six (6") pipe shall be furnished with a "valve-box-alignment-device" (VBAD).
- Buried valves larger than 12" requiring surface access via conventional cast-iron or six (6") pipe must utilize a VBAD – call manufacture for specific sizing.
- The VBAD shall be colored white and of HDPE manufacture/construction.
- VBAD containing metal/ferrous components shall not be accepted.
- VBAD shall be furnished in multiple pieces and snap-assembled loosely to the exposed valve/gear stem, below the operating nut and above seal-plate/gear-box.
- VBAD assembly to valve shall not require operating nut to be removed and reaffixed.
- Single piece VBAD will not be accepted.
- VBAD shall be and remain "non-load-bearing" upon assembly.
- Load-bearing by means of VBAD having direct contact with the buried valve appurtenance facilitating the transfer of surface forces through valve box/valve access conduit directly to the water or sewer main.
- Each VBAD shall be furnished with specific installation instruction.
- VBAD shall be the Boxlok as manufactured by EMMA Sales, LLC. or approved equal.



EMMA SALES LLC
13245 Atlantic Blvd
Suite 4304
Jacksonville, FL 32225
PHONE: 615 210 9141
FAX: 888 542 6861
processing@emmasales.com
emmasales.com



U.S. Patent No. 7575018 and 8430116

Boxlok Customer References

City References:

Duane Gilles

Water Distribution Manager City of Evansville, Indiana – *Retired after 40 years with the city*

Currently Involved: Water for People Indiana; Water for People Florida; Project Manager with Crawford, Murphy and Tilly, Inc. Consulting Engineers

Mobile: (812) 305-6684

duanegilles@gmail.com

Duane and the City of Evansville have been using the Boxlok since 2006 with thousands in the ground.

Robby Phillips

Distribution Manager of Manatee County Public Works Department

Office: (941) 792-8811 EXT 5149

Robby.phillips@mymanatee.org

Manatee County uses the Boxlok designed for a 6" PVC Riser Application (Boxlok-4, Boxlok-3, and Boxlok-K3). Manatee County has been using the Boxlok since 2015.

Mike Lawson

Supervisor Greater Cincinnati Waterworks Inspection

Office: (513) 591-7870

Mike.Lawson@gcww.cincinnati-oh.gov



EMMA SALES LLC
13245 Atlantic Blvd
Suite 4304
Jacksonville, FL 32225
PHONE: 615 210 9141
FAX: 888 542 6861
processing@emmasales.com
emmasales.com



U.S. Patent No. 7575018 and 8430116

Mark Niehe

Supervisor Greater Cincinnati Waterworks Inspection – *Retired*

Mobile: (513) 375-7180

GCWW has been using the Boxlok since 2010 with thousands in the ground.

Distributor References:

Kevin Chapman

Branch Manager of Utility Pipe Sales Co.

Office: (812) 867-7471

kevinc@utilpipe.com

Utility Pipe Sales has been quoting and selling the Boxlok for many years in the Evansville area.

Austin Jameson

Operations Manager of Core & Main St. John, Indiana

Mobile: (219) 742-9065

Austin.Jameson@coreandmain.com

Core & Main sells the Boxlok across the country.

EMMA SALES, LLC BOXLOK PRODUCT REVIEW MANUFACTURING FACILITY INFORMATION

The Boxlok is manufactured by

Pioneer Plastics, Inc.
1584 Hwy 41A North
Dixon, KY 42409
USA
270-639-9142
270-639-5882 (Fax)

Contact Information is Terry Winstead, Production Manager
twinstead@pioneerplastics.com



With over 35 years of experience and extensive training in the plastics injection molding industry, we are able to meet and exceed the tightest schedules. As a leading provider of injection molded plastic parts in the Midwest, Pioneer Plastics' in-house rapid prototyping, custom plastic injection mold design and production of tools give your company the ability to transform your project from concept to reality.





EMMA SALES LLC
 13245 Atlantic Blvd
 Suite 4304
 Jacksonville, FL 32225
 PHONE: 615 210 9141
 FAX: 888 542 6861
 processing@emmasales.com
emmasales.com



U.S. Patent No. 7575018 and 8430116

BOXLOK VIDEO

<https://www.youtube.com/watch?v=6lE9f2dNIRc&t=4s>

THE VALVE BOX ALIGNER
BOXLOK

615.210.9141
 BOXLOK.COM

VALVE BOX SHIFT ISSUES?

ELIMINATES VALVE BOX SHIFT – PREVENTING COSTLY REWORK

FOR USE WITH CAST IRON VALVE BOXES & 6" PVC PIPE RISERS

WORKS WITH NEARLY ALL BURIED AWWA VALVES

NON-LOAD BEARING DESIGN

VALVE DISASSEMBLY NOT REQUIRED

U.S. PATENT NO. 7575018 AND 8430116

MADE IN USA